






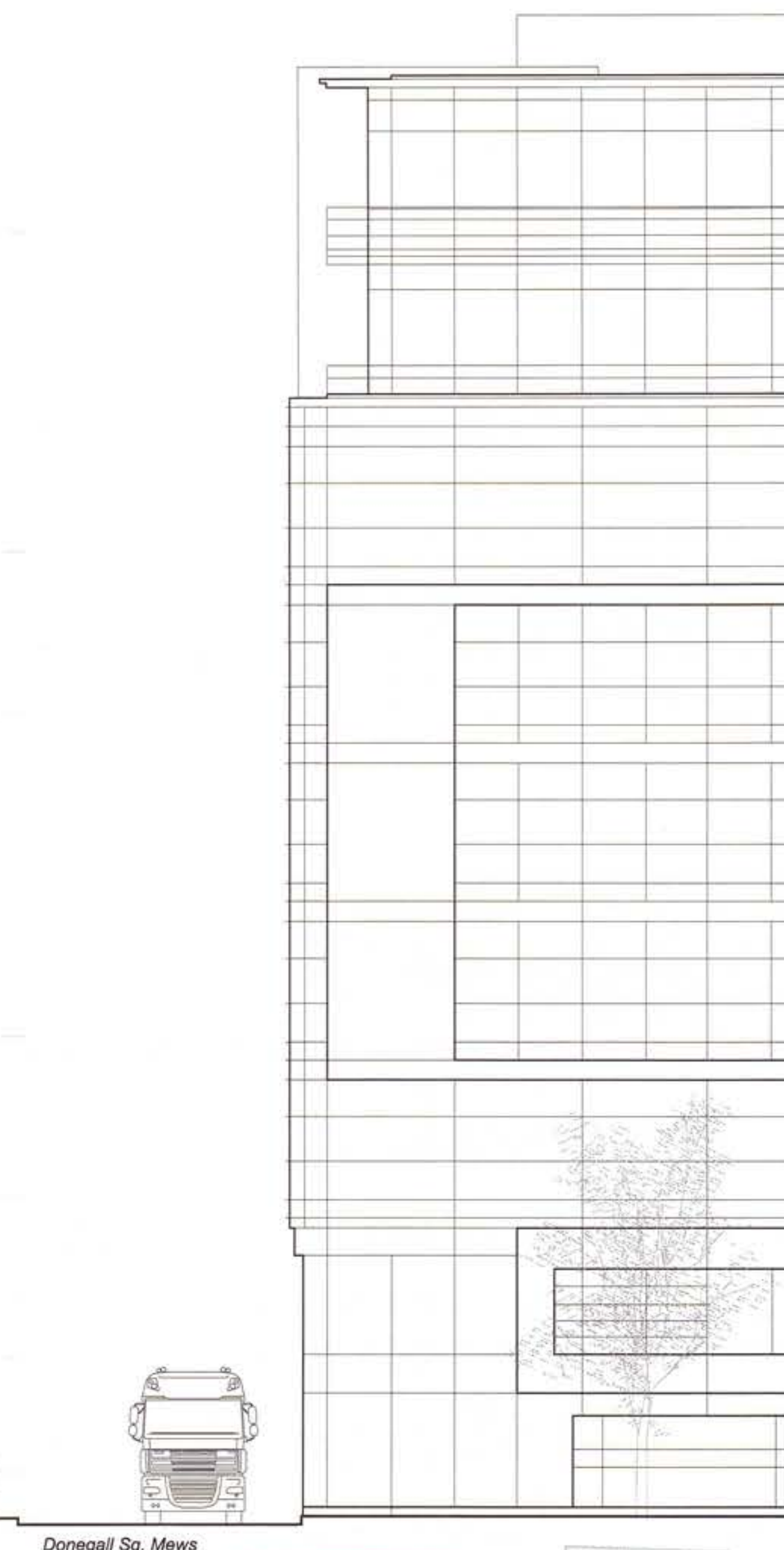
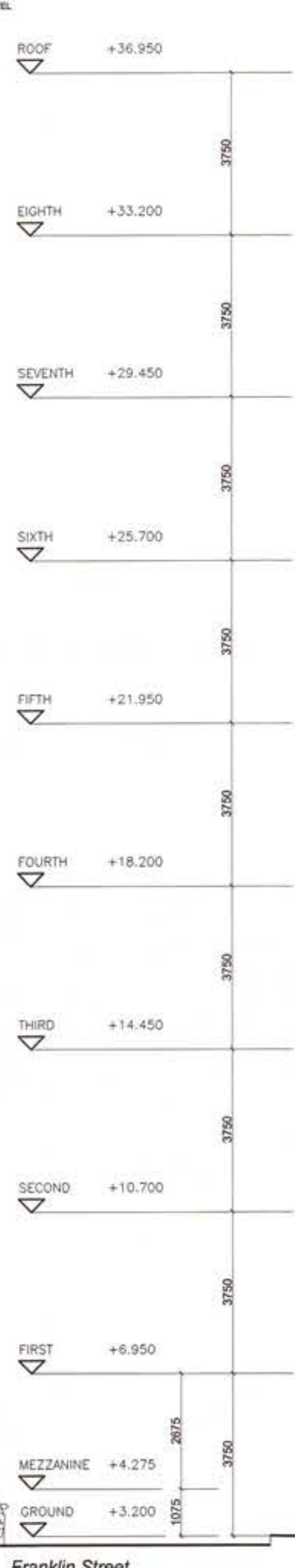


**LEGEND**

- MATERIAL FINISHES**
-  WHITE NATURAL STONE FACING - HORIZONTAL FORMAT WITH RETURNS TO SOFFITS AND RECESSED OPENINGS (BLUE GREY NATURAL STONE FACED PLINTH APPROX. 700mm HIGH)
  -  WHITE 'LOOK-A-LIKE' SPANDELS PANELS WITH PROJECTING FACE CAPS
  -  DARK GREY CLADDING PANELS WITH RETURNS TO SOFFITS AND RECESSED OPENINGS
  -  DARK GREY POLYESTER POWDER COATED ALUMINIUM FRAMED CURTAIN WALLING WITH CLEAR GLASS UNITS, INTEGRATED LOUVRES AND PROJECTING FACE CAPS HORIZONTALLY AT FLOOR LEVELS WITHIN SCREENS AND VERTICALLY ON PENTHOUSE LEVEL.
  -  DARK GREY POLYESTER POWDER COATED ALUMINIUM FRAMED CURTAIN WALLING 'LOOK-A-LIKE' SPANDELS, GLASS UNITS
  -  WHITE THROUGH COLOUR INSULATED RENDER SYSTEM
  -  DARK GREY LOUVRE SYSTEM WITH INTEGRATED DOORS FOR ROOF ACCESS



**ADELAIDE STREET EAST ELEVATION**  
9-21 Adelaide Street Redevelopment, Belfast

**Drawing**  
Number... 11/A

DEPARTMENT OF THE ENVIRONMENT (NI)  
**AMENDED DRAWING**

Area Planning Office RECEIVED  
16 MAR 2015

**PLANNING DRAWING**

STATUS	DESCRIPTION	DATE	CHECKED BY
-	Original drawing	05.02.15	MB
A	PLANNING AMENDMENTS	13.03.15	MB

STATUS	DESCRIPTION	DATE	CHECKED BY
-	Original drawing	05.02.15	MB
A	PLANNING AMENDMENTS	13.03.15	MB

CLIENT	PROJECT	DRAWING	STAGE	PLANNING DATE	NO.	SCALE	DL (PL)
McALEER & RUSHE	OFFICE DEVELOPMENT 9-21 ADELAIDE STREET BELFAST	ADELAIDE STREET EAST ELEVATION	C-D	N/A	14009	1:100	200 Rev A

